

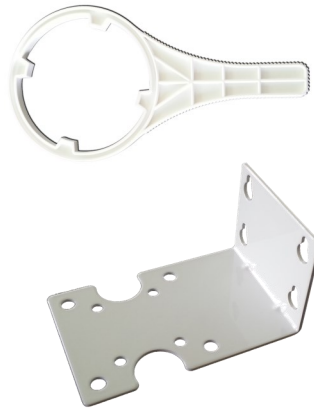
Single housings



Our standard single filter housings are available in reinforced polypropylene and styrene acrylonitrile. The choice of the material is depending on the use of the filter housing. The clear bowl provides convenience of on-site and the blue bowl has excellent chemical and impact resistance. The standard housings can hold 10" and 20" cartridges with a diameter of 70 mm max. For large diameters we have big blue housings in our program, the maximum cartridge diameter is 115 mm. For special requirements we can make custom made single filter housings. Extra accessories are a key for easy opening and closing of the housing and a bracket for installation.

Applications

- Chemicals
- Laboratory
- Facilities
- Pre filtration RO
- Electronics
- Food & Beverage
- Cooling water



Specifications

Specifications	
Materials	
Housing	Reinforced PP Styrene Acrylonitrile
Cap	Reinforced PP
O-ring	Buna-N
Dimensions	
Outside diameter	92 mm
Length 10"	314 mm
Length 20"	571 mm
Other	
Inlet/Outlet	½" NPTF ¾" NPTF
Colour Housing	Blue (Polypropylene) Clear (Styrene Acryl.)
Flow rate 10"	0 to 1.1 m³/hr
Flow rate 20"	0 to 2.2 m³/hr
Max. temperature	60° C
Max. pressure	8,6 Bar

Specifications big blue housing

Specifications big blue housing	
Dimensions	
Outside diameter	148 mm
Length 10"	353 mm
Length 20"	604 mm
Other	
Inlet/Outlet	1" NPTF / BSPF 1½" NPTF / BSPF
Flow rate 10"	0 to 4,5 m³/hr
Flow rate 20"	0 to 9 m³/hr
Max. temperature	60° C
Max. pressure	7 Bar

For Clear Solutions